



CELLULAR NANO BRET KINASE ASSAYS LIST

ASSAY NAME	KINASE NAME	OFFICIAL FULL NAME	ALIASES
AAK1 -NanoBRET	AAK1	AP2 associated kinase 1	-
ABL1 -NanoBRET	ABL1	ABL proto-oncogene 1, non-receptor tyrosine kinase	ABL, JTK7, p150, c-ABL, v-abl, c-ABL1, bcr/ abl
ABL1 (E255K) -NanoBRET	ABL1	c-abl oncogene 1, receptor tyrosine kinase	ABL, JTK7, p150, c-ABL, v-abl, bcr/ abl, ABL1
ABL1 (F317I) -NanoBRET	ABL1	c-abl oncogene 1, receptor tyrosine kinase	ABL, JTK7, p150, c-ABL, v-abl, bcr/ abl, ABL1
ABL1 (F317L) -NanoBRET	ABL1	c-abl oncogene 1, receptor tyrosine kinase	ABL, JTK7, p150, c-ABL, v-abl, bcr/ abl, ABL1
ABL1 (H396P) -NanoBRET	ABL1	c-abl oncogene 1, receptor tyrosine kinase	ABL, JTK7, p150, c-ABL, v-abl, bcr/ abl, ABL1
ABL1 (M351T) -NanoBRET	ABL1	c-abl oncogene 1, receptor tyrosine kinase	ABL, JTK7, p150, c-ABL, v-abl, bcr/ abl, ABL1
ABL1 (Q252H) -NanoBRET	ABL1	c-abl oncogene 1, receptor tyrosine kinase	ABL, JTK7, p150, c-ABL, v-abl, bcr/ abl, ABL1
ABL1 (T315I) -NanoBRET	ABL1	c-abl oncogene 1, receptor tyrosine kinase	ABL, JTK7, p150, c-ABL, v-abl, bcr/ abl, ABL1
ABL1 (Y253F) -NanoBRET	ABL1	c-abl oncogene 1, receptor tyrosine kinase	ABL, JTK7, p150, c-ABL, v-abl, bcr/ abl, ABL1
ABL2 -NanoBRET	ABL2	ABL proto-oncogene 2, non-receptor tyrosine kinase	ABLL, ARG
ACVR1 -NanoBRET	ACVR1	activin A receptor type 1	ACTRI, ACVR1A, ACVRLK2, ALK2, FOP, SKR1, TSRI
ACVR1 (G328V) -NanoBRET	ACVR1	activin A receptor type 1	ACTRI, ACVR1A, ACVRLK2, ALK2, FOP, SKR1, TSRI
ACVR1 (G356D) -NanoBRET	ACVR1	activin A receptor type 1	ACTRI, ACVR1A, ACVRLK2, ALK2, FOP, SKR1, TSRI
ACVR1 (Q207D) -NanoBRET	ACVR1	activin A receptor type 1	ACTRI, ACVR1A, ACVRLK2, ALK2, FOP, SKR1, TSRI
ACVR1 (R206H) -NanoBRET	ACVR1	activin A receptor type 1	ACTRI, ACVR1A, ACVRLK2, ALK2, FOP, SKR1, TSRI
ACVRL1 -NanoBRET	ACVRL1	activin A receptor like type 1	ACVRLK1, ALK-1, ALK1, HHT, HHT2, ORW2, SKR3, TSR-I



CELLULAR NANOBRET KINASE ASSAYS LIST (CONTINUED)

ASSAY NAME	KINASE NAME	OFFICIAL FULL NAME	ALIASES
ADK -NanoBRET	ADK	adenosine kinase	AK
AKT1 -NanoBRET	AKT1	v-akt murine thymoma viral oncogene homolog 1	AKT, PKB, RAC, PRKBA, MGC99656, PKB-ALPHA, RAC-ALPHA, AKT1
AKT1 (E17K) -NanoBRET	AKT1	v-akt murine thymoma viral oncogene homolog 1	AKT, PKB, RAC, PRKBA, MGC99656, PKB-ALPHA, RAC-ALPHA, AKT1
AKT2 -NanoBRET	AKT2	AKT serine/ threonine kinase 2	PKBB, PRKBB, HIHGHH, PKBBETA, RAC-BETA
AKT2 (E17K) -NanoBRET	AKT2	AKT serine/ threonine kinase 2	PKBB, PRKBB, PKBBETA, RAC-BETA, AKT2
AKT3 (E17K) -NanoBRET	AKT3	v-akt murine thymoma viral oncogene homolog 3	PKBG, PRKBG, STK-2, PKB-GAMMA, RAC-gamma, RAC-PK-gamma, DKFZp434No250
AKT3 (G171R) -NanoBRET	AKT3	v-akt murine thymoma viral oncogene homolog 3	PKBG, PRKBG, STK-2, PKB-GAMMA, RAC-gamma, RAC-PK-gamma, DKFZp434No250
ALK4 -NanoBRET	ACVR1B	activin A receptor type 1B	ALK4, SKR2, ACTRIB, ACVRLK4
Aurora A -NanoBRET	AURKA	aurora kinase A	AIK, ARK1, AURA, BTAK, STK6, STK7, STK15, PPP1R47
Aurora B -NanoBRET	AURKB	aurora kinase B	AIK2, AIM1, ARK2, AurB, IPL1, STK5, AIM-1, STK12, PPP1R48, aurkb-sv1, aurkb-sv2
Aurora C -NanoBRET	AURKC	aurora kinase C	AIE2, AIK3, ARK3, AurC, SPGF5, STK13, HEL-S-90, aurora-C
AXL -NanoBRET	AXL	AXL receptor tyrosine kinase	ARK, UFO, JTK11, Tyro7
BLK -NanoBRET	BLK	BLK proto-oncogene, Src family tyrosine kinase	MODY11
BMP2K -NanoBRET	BMP2K	BMP2 inducible kinase	BIKE, HRIHFB2017
BMPR1A -NanoBRET	BMPR1A	bone morphogenetic protein receptor type 1A	10q23del, ACVRLK3, ALK3, CD292, SKR5
BMX -NanoBRET	BMX	BMX non-receptor tyrosine kinase	ETK, PSCTK2, PSCTK3
BRAF (V600E) -NanoBRET	BRAF	B-Raf proto-oncogene, serine/ threonine kinase	B-RAF1, B-raf, BRAF1, NS7, RAFB1
BRK -NanoBRET	PTK6	protein tyrosine kinase 6	BRK
BRSK1 -NanoBRET	BRSK1	BR serine/ threonine kinase 1	hSAD1
BRSK2 -NanoBRET	BRSK2	BR serine/ threonine kinase 2	C11orf7, PEN11B, SAD1, SADA, STK29



CELLULAR NANOBRET KINASE ASSAYS LIST (CONTINUED)

ASSAY NAME	KINASE NAME	OFFICIAL FULL NAME	ALIASES
BTK -NanoBRET	BTK	bruton tyrosine kinase	-
BTK (C481S) -NanoBRET	BTK	Bruton agammaglobulinemia tyrosine kinase	AT, ATK, BPK, XLA, IMD1, AGMX1, PSCTK1, MGC126261, MGC126262, BTK
BTK (E41K) -NanoBRET	BTK	Bruton agammaglobulinemia tyrosine kinase	AT, ATK, BPK, XLA, IMD1, AGMX1, PSCTK1, MGC126261, MGC126262, BTK
BTK (P190K) -NanoBRET	BTK	Bruton agammaglobulinemia tyrosine kinase	AT, ATK, BPK, XLA, IMD1, AGMX1, PSCTK1, MGC126261, MGC126262, BTK
CAMK1 -NanoBRET	CAMK1	calcium/ calmodulin dependent protein kinase I	CAMKI
CAMK1D -NanoBRET	CAMK1D	calcium/ calmodulin dependent protein kinase ID	CKLiK, CaM-K1, CaMKID
CAMK1G -NanoBRET	CAMK1G	calcium/ calmodulin dependent protein kinase IG	CLICK3, CLICKIII, VWS1, dJ272L16.1
CAMK2A -NanoBRET	CAMK2A	calcium/ calmodulin dependent protein kinase II alpha	CAMKA, CaMKIINalpha, CaMKIIalpha, MRD53, MRT63
CAMK2D -NanoBRET	CAMK2D	calcium/ calmodulin dependent protein kinase II delta	CAMKD
CAMK2G -NanoBRET	CAMK2G	calcium/ calmodulin dependent protein kinase II gamma	CAMK, CAMK-II, CAMKG, MRD59
CDK1/ Cyclin B1 -NanoBRET	CDK1	cyclin dependent kinase 1	CDC2, CDC28A, P34CDC2
CDK1/ Cyclin E1 -NanoBRET	CDK1	cyclin dependent kinase 1	CDC2, CDC28A, P34CDC2
CDK10/ Cyclin L2 -NanoBRET	CDK10	cyclin dependent kinase 10	ALSAS, PISSLRE
CDK11A/ Cyclin K -NanoBRET	CDK11A	cyclin dependent kinase 11A	CDC2L2, PITSLREB
CDK11A/ Cyclin L2 -NanoBRET	CDK11A	cyclin dependent kinase 11A	CDC2L2, PITSLREB
CDK11B/ Cyclin K -NanoBRET	CDK11B	cyclin dependent kinase 11B	CDC2L1, PITSLREA



CELLULAR NANOBRET KINASE ASSAYS LIST (CONTINUED)

ASSAY NAME	KINASE NAME	OFFICIAL FULL NAME	ALIASES
CDK11B/ Cyclin L2 -NanoBRET	CDK11B	cyclin dependent kinase 11B	CDC2L1, PITSLREA
CDK14/ Cyclin Y -NanoBRET	CDK14	cyclin dependent kinase 14	PFTAIRE1, PFTK1
CDK15/ Cyclin Y -NanoBRET	CDK15	cyclin dependent kinase 15	ALS2CR7, PFTAIRE2, PFTK2
CDK16/ Cyclin Y -NanoBRET	CDK16	cyclin dependent kinase 16	PCTAIRE, PCTAIRE1, PCTGAIRE, PCTK1
CDK17/ Cyclin Y -NanoBRET	CDK17	cyclin dependent kinase 17	PCTAIRE2, PCTK2
CDK18/ Cyclin Y -NanoBRET	CDK18	cyclin dependent kinase 18	PCTAIRE, PCTAIRE3, PCTK3
CDK19/ Cyclin C -NanoBRET	CDK19	cyclin dependent kinase 19	CDC2L6, CDK11, bA346C16.3
CDK2/ Cyclin A1 -NanoBRET	CDK2	cyclin dependent kinase 2	CDKN2, p33 (CDK2)
CDK2/ Cyclin E1 -NanoBRET	CDK2	cyclin dependent kinase 2	CDKN2, p33 (CDK2)
CDK20/ Cyclin H -NanoBRET	CDK20	cyclin dependent kinase 20	CCRK, CDCH, P42, PNQALRE
CDK3/ Cyclin E1 -NanoBRET	CDK3	cyclin dependent kinase 3	-
CDK4/ Cyclin D1 -NanoBRET	CDK4	cyclin dependent kinase 4	CMM3, PSK-J3
CDK4/ Cyclin D3 -NanoBRET	CDK4	cyclin dependent kinase 4	CMM3, PSK-J3
CDK5/ CDK5R1 -NanoBRET	CDK5	cyclin dependent kinase 5	LIS7, PSSALRE
CDK5/ CDK5R2 -NanoBRET	CDK5	cyclin dependent kinase 5	LIS7, PSSALRE
CDK6/ Cyclin D1 -NanoBRET	CDK6	cyclin dependent kinase 6	MCPH12, PLSTIRE



CELLULAR NANOBRET KINASE ASSAYS LIST (CONTINUED)

ASSAY NAME	KINASE NAME	OFFICIAL FULL NAME	ALIASES
CDK7 -NanoBRET	CDK7	cyclin dependent kinase 7	CAK, CAK1, CDKN7, HCAK, MO15, STK1, p39MO15
CDK8/ Cyclin C -NanoBRET	CDK8	cyclin dependent kinase 8	K35
CDK9/ Cyclin K -NanoBRET	CDK9	cyclin dependent kinase 9	C-2k, CDC2L4, CTK1, PITALRE, TAK
CDK9/ Cyclin T1 -NanoBRET	CDK9	cyclin dependent kinase 9	C-2k, CDC2L4, CTK1, PITALRE, TAK
CDKL1 -NanoBRET	CDKL1	cyclin dependent kinase like 1	KKIALRE, P42
CDKL2 -NanoBRET	CDKL2	cyclin dependent kinase like 2	KKIAMRE, P56
CDKL3 -NanoBRET	CDKL3	cyclin dependent kinase like 3	NKIAMRE
CDKL5 -NanoBRET	CDKL5	cyclin dependent kinase like 5	CFAP247, EIEE2, ISSX, STK9
CHEK1 -NanoBRET	CHEK1	checkpoint kinase 1	CHK1
CHEK2 -NanoBRET	CHEK2	checkpoint kinase 2	CDS1, CHK2, HuCds1, LFS2, PP1425, RAD53, hCds1
CLK1 -NanoBRET	CLK1	CDC like kinase 1	CLK, STY, CLK/ STY
CLK2 -NanoBRET	CLK2	CDC like kinase 2	
CLK4 -NanoBRET	CLK4	CDC like kinase 4	
COQ8B -NanoBRET	COQ8B	coenzyme Q8B	ADCK4, NPHS9
CSF1R -NanoBRET	CSF1R	colony stimulating factor 1 receptor	FMS, CSFR, FIM2, HDLS, C-FMS, CD115, CSF-1R, M-CSF-R
CSK -NanoBRET	CSK	C-terminal Src kinase	
CSNK1A1L -NanoBRET	CSNK1A1L	casein kinase 1 alpha 1 like	CK1
CSNK1D -NanoBRET	CSNK1D	casein kinase 1 delta	ASPS, CKI-delta, CKId, CKIdelta, FASPS2, HCKID
CSNK1E -NanoBRET	CSNK1E	casein kinase 1 epsilon	CK1e, CK1epsilon, HCKIE
CSNK1G2 -NanoBRET	CSNK1G2	casein kinase 1 gamma 2	CK1g2
CSNK2A1 -NanoBRET	CSNK2A1	casein kinase 2 alpha 1	CK2A1, CKII, Cka1, Cka2, OCNDS
CSNK2A2 -NanoBRET	CSNK2A2	casein kinase 2 alpha 2	CK2A2, CSNK2A1, CK2alpha'



CELLULAR NANOBRET KINASE ASSAYS LIST (CONTINUED)

ASSAY NAME	KINASE NAME	OFFICIAL FULL NAME	ALIASES
DAPK2 -NanoBRET	DAPK2	death-associated protein kinase 2	DRP-1, DRP1
DCLK3 -NanoBRET	DCLK3	doublecortin like kinase 3	CLR, DCAMKL3, DCDC3C, DCK3
DDR1 -NanoBRET	DDR1	discoidin domain receptor tyrosine kinase 1	
DDR2 -NanoBRET	DDR2	discoidin domain receptor tyrosine kinase 2	TKT, MIG2oa, NTRKR3, TYRO10
DDR2 (N456S) -NanoBRET	DDR2	discoidin domain receptor tyrosine kinase 2	TKT, MIG2oa, NTRKR3, TYRO10
DYRK1A -NanoBRET	DYRK1A	dual specificity tyrosine phosphorylation regulated kinase 1B	DYRK, DYRK1, HP86, MNB, MNBH, MRD7
DYRK1B -NanoBRET	DYRK1B	dual specificity tyrosine phosphorylation regulated kinase 1B	AOMS3, MIRK
DYRK2 -NanoBRET	DYRK2	dual-specificity tyrosine- (Y)-phosphorylation regulated kinase 2	-
EIF2AK4 (Dom.2) -NanoBRET	EIF2AK4	eukaryotic translation initiation factor 2 alpha kinase 4	GCN2, PVOD2
EPHA1 -NanoBRET	EPHA1	EPH receptor A1	EPH, EPHT, EPHT1
EPHA2 -NanoBRET	EPHA2	EPH receptor A2	ECK, CTPA, ARCC2, CTPP1, CTRCT6
EPHA3 -NanoBRET	EPHA3	EPH receptor A3	EK4, ETK, HEK, ETK1, HEK4, TYRO4
EPHA4 -NanoBRET	EPHA4	EPH receptor A4	SEK, HEK8, TYRO1
EPHA5 -NanoBRET	EPHA5	EPH receptor A5	CEK7, EHK-1, EHK1, EK7, HEK7, TYRO4
EPHA6 -NanoBRET	EPHA6	EPH receptor A6	EHK-2, EHK2, EK12, EPA6, HEK12, PRO57066
EPHA7 -NanoBRET	EPHA7	EPH receptor A7	EHK-3, EHK3, EK11, HEK11
EPHA8 -NanoBRET	EPHA8	EPH receptor A8	EEK, EK3, HEK3
EPHB1 -NanoBRET	EPHB1	EPH receptor B1	ELK, NET, Hek6, EPHT2
EPHB2 -NanoBRET	EPHB2	EPH receptor B2	CAPB, DRT, EK5, EPHT3, ERK, Hek5, PCBC, Tyro5
EPHB3 -NanoBRET	EPHB3	EPH receptor B3	EK2, ETK2, HEK2, TYRO6
EPHB4 -NanoBRET	EPHB4	EPH receptor B4	HFASD, HTK, MYK1, TYRO11



CELLULAR NANOBRET KINASE ASSAYS LIST (CONTINUED)

ASSAY NAME	KINASE NAME	OFFICIAL FULL NAME	ALIASES
ERK1 -NanoBRET	MAPK3	mitogen-activated protein kinase 3	ERK1, ERT2, ERK-1, PRKM3, P44ERK1, P44MAPK, HS44KDAP, HUMKER1A, p44-ERK1, p44-MAPK
ERK2 -NanoBRET	MAPK1	mitogen-activated protein kinase 1	ERK, p38, p40, p41, ERK2, ERT1, MAPK2, PRKM1, PRKM2, P42MAPK, p41mapk, MAPK1
ERN1 -NanoBRET	ERN1	endoplasmic reticulum to nucleus signaling 1	IRE1, IRE1P, IRE1a, hIRE1p
ERN2 -NanoBRET	ERN2	endoplasmic reticulum to nucleus signaling 2	IRE1-BETA, IRE1b, IRE2p, hIRE2p, IRE2
FAK -NanoBRET	PTK2	protein tyrosine kinase 2	FAK, FADK, FAK1, FRNK, PPP1R71, p125FAK, pp125FAK
FER -NanoBRET	FER	FER tyrosine kinase	PPP1R74, TYK3, p94-Fer
FES -NanoBRET	FES	FES proto-oncogene, tyrosine kinase	FPS, FES
FGFR1 -NanoBRET	FGFR1	fibroblast growth factor receptor 1	CEK, FLG, HH2, OGD, ECCL, FLT2, KAL2, BFGFR, CD331, FGFBR, FLT-2, HBGFR, N-SAM, FGFR-1, HRTFDS, bFGF-R-1
FGFR2 -NanoBRET	FGFR2	fibroblast growth factor receptor 2	BEK, JWS, BBDS, CEK3, CFD1, ECT1, KGFR, TK14, TK25, BFR-1, CD332, K-SAM
FGFR3 -NanoBRET	FGFR3	fibroblast growth factor receptor 3	ACH, CEK2, JTK4, CD333, HSFGR3EX
FGFR3 (G697C) -NanoBRET	FGFR3	fibroblast growth factor receptor 3	ACH, CEK2, JTK4, CD333, HSFGR3EX
FGFR4 -NanoBRET	FGFR4	fibroblast growth factor receptor 4	TKF, JTK2, CD334
FGR -NanoBRET	FGR	FGR proto-oncogene, Src family tyrosine kinase	SRC2, c-fgr, c-src2, p55-Fgr, p55c-fgr, p58-Fgr, p58c-fgr
FLT1 -NanoBRET	FLT1	fms-related tyrosine kinase 1 (vascular endothelial growth factor/vascular permeability factor receptor)	FLT, VEGFR1, FLT1
FLT3 -NanoBRET	FLT3	fms related tyrosine kinase 3	FLK2, STK1, CD135, FLK-2
FLT3 (D835H) -NanoBRET	FLT3	fms-related tyrosine kinase 3	FLK2, STK1, CD135, FLK-2
FLT3 (D835V) -NanoBRET	FLT3	fms-related tyrosine kinase 3	FLK2, STK1, CD135, FLK-2
FLT3 (D835Y) -NanoBRET	FLT3	fms-related tyrosine kinase 3	FLK2, STK1, CD135, FLK-2
FLT3 (K663Q) -NanoBRET	FLT3	fms-related tyrosine kinase 3	FLK2, STK1, CD135, FLK-2



CELLULAR NANOBRET KINASE ASSAYS LIST (CONTINUED)

ASSAY NAME	KINASE NAME	OFFICIAL FULL NAME	ALIASES
FLT3 (N841I) -NanoBRET	FLT3	fms-related tyrosine kinase 3	FLK2, STK1, CD135, FLK-2
FLT3 (R834Q) -NanoBRET	FLT3	fms-related tyrosine kinase 3	FLK2, STK1, CD135, FLK-2
FRK -NanoBRET	FRK	fyn related Src family tyrosine kinase	GTK, PTK5, RAK
FYN -NanoBRET	FYN	FYN proto-oncogene, Src family tyrosine kinase	SLK, SYN, p59-FYN
FYN (Y531F) -NanoBRET	FYN	FYN proto-oncogene, Src family tyrosine kinase	SLK, SYN, p59-FYN
GAK -NanoBRET	GAK	cyclin G associated kinase	DNAJ26, DNAJC26
GSK3A -NanoBRET	GSK3A	glycogen synthase kinase 3 alpha	-
GSK3B -NanoBRET	GSK3B	glycogen synthase kinase 3 beta	-
HCK -NanoBRET	HCK	HCK proto-oncogene, Src family tyrosine kinase	JTK9, p59Hck, p61Hck
HIPK2 -NanoBRET	HIPK2	homeodomain interacting protein kinase 2	PRO0593
HIPK3 -NanoBRET	HIPK3	homeodomain interacting protein kinase 3	PKY, YAK1, DYRK6, FIST3
HIPK4 -NanoBRET	HIPK4	homeodomain interacting protein kinase 4	-
ICK -NanoBRET	CILK1	ciliogenesis associated kinase 1	ECO, EJM10, ICK, LCK2, MRK, hICK
IGF1R -NanoBRET	IGF1R	insulin-like growth factor 1 receptor	IGFR, CD221, IGFIR, JTK13, MGC18216, MGC142170, MGC142172, IGF1R
IKBKE -NanoBRET	IKBKE	inhibitor of nuclear factor kappa B kinase subunit epsilon	IKK-E, IKK-i, IKKE, IKKI
INSR -NanoBRET	INSR	insulin receptor	HHF5, CD220, INSR
IRAK1 -NanoBRET	IRAK1	interleukin 1 receptor associated kinase 1	IRAK, pelle
IRAK3 -NanoBRET	IRAK3	interleukin 1 receptor associated kinase 3	ASRT5, IRAKM
IRAK4 -NanoBRET	IRAK4	Interleukin 1 receptor associated kinase 4	IPD1, REN64, IRAK-4, NY-REN-64
ITK -NanoBRET	ITK	IL2 inducible T-cell kinase	EMT, LYK, LPFS1, PSCTK2
JAK2 -NanoBRET	JAK2	Janus kinase 2	JTK10, THCYT3
JAK2 (JH1 domain) -NanoBRET	JAK2	Janus kinase 2	JTK10, THCYT3
JAK2 (V617F) -NanoBRET	JAK2	Janus kinase 2	JTK10, THCYT3



CELLULAR NANOBRET KINASE ASSAYS LIST (CONTINUED)

ASSAY NAME	KINASE NAME	OFFICIAL FULL NAME	ALIASES
JAK3 -NanoBRET	JAK3	Janus kinase 3	JAKL, LJAK, JAK-3, L-JAK, JAK3_HUMAN
JNK1 -NanoBRET	MAPK8	mitogen-activated protein kinase 8	JNK, JNK1, PRKM8, SAPK1, JNK-46, JNK1A2, SAPK1c, JNK21B1/ 2
JNK2 -NanoBRET	MAPK9	mitogen-activated protein kinase 9	JNK-55, JNK2, JNK2A, JNK2ALPHA, JNK2B, JNK2BETA, PRKM9, SAPK, SAPK1a, p54a, p54aSAPK
JNK3 -NanoBRET	MAPK10	mitogen-activated protein kinase 10	JNK3, JNK3A, PRKM10, SAPK1b, p493F12, p54bSAPK
KIT -NanoBRET	KIT	KIT proto-oncogene receptor tyrosine kinase	PBT, SCFR, C-Kit, CD117
KIT (A829P) -NanoBRET	KIT	KIT proto-oncogene, receptor tyrosine kinase	C-Kit, CD117, MASTC, PBT, SCFR
KIT (D816H) -NanoBRET	KIT	KIT proto-oncogene, receptor tyrosine kinase	C-Kit, CD117, MASTC, PBT, SCFR
KIT (D816V) -NanoBRET	KIT	KIT proto-oncogene, receptor tyrosine kinase	C-Kit, CD117, MASTC, PBT, SCFR
KIT (L576P) -NanoBRET	KIT	KIT proto-oncogene, receptor tyrosine kinase	C-Kit, CD117, MASTC, PBT, SCFR
KIT (V559D) -NanoBRET	KIT	KIT proto-oncogene, receptor tyrosine kinase	C-Kit, CD117, MASTC, PBT, SCFR
KIT (V559D,T670I) -NanoBRET	KIT	KIT proto-oncogene, receptor tyrosine kinase	C-Kit, CD117, MASTC, PBT, SCFR
KIT (V559D,V654A) -NanoBRET	KIT	KIT proto-oncogene, receptor tyrosine kinase	C-Kit, CD117, MASTC, PBT, SCFR
LATS1 -NanoBRET	LATS1	large tumor suppressor kinase 1	WARTS, wts
LATS2 -NanoBRET	LATS2	large tumor suppressor kinase 2	KPM
LCK -NanoBRET	LCK	LCK proto-oncogene, Src family tyrosine kinase	LSK, YT16, IMD22, p56lck, pp58lck
LIMK1 -NanoBRET	LIMK1	LIM domain kinase 1	LIMK, LIMK-1
LIMK2 -NanoBRET	LIMK2	LIM domain kinase 2	
LRRK2 -NanoBRET	LRRK2	leucine-rich repeat kinase 2	PARK8, RIPK7, ROCO2, AURA17, DARDARIN
LRRK2 (G2019S) -NanoBRET	LRRK2	leucine-rich repeat kinase 2	PARK8, RIPK7, ROCO2, AURA17, DARDARIN
LRRK2 (I2020T) -NanoBRET	LRRK2	leucine-rich repeat kinase 2	PARK8, RIPK7, ROCO2, AURA17, DARDARIN



CELLULAR NANOBRET KINASE ASSAYS LIST (CONTINUED)

ASSAY NAME	KINASE NAME	OFFICIAL FULL NAME	ALIASES
LRRK2 (R1441C) -NanoBRET	LRRK2	leucine-rich repeat kinase 2	PARK8, RIPK7, ROCO2, AURA17, DARDARIN
LTK -NanoBRET	LTK	leukocyte receptor tyrosine kinase	TYK1
LYN -NanoBRET	LYN	LYN proto-oncogene, Src family tyrosine kinase	JTK8, p53Lyn, p56Lyn
MAP2K6 -NanoBRET	MAP2K6	mitogen-activated protein kinase kinase 6	MAPKK6, MEK6, MKK6, PRKMK6, SAPKK-3, SAPKK3
MAP3K10 -NanoBRET	MAP3K10	mitogen-activated protein kinase kinase kinase 10	MST, MLK2, MEKK10
MAP3K11 -NanoBRET	MAP3K11	mitogen-activated protein kinase kinase kinase 11	MLK3, PTK1, SPRK, MLK-3, MEKK11
MAP3K12 -NanoBRET	MAP3K12	mitogen-activated protein kinase kinase kinase 12	DLK, MEKK12, MUK, ZPK, ZPKP1
MAP3K13 -NanoBRET	MAP3K13	mitogen-activated protein kinase kinase kinase 13	LZK, MEKK13, MLK
MAP3K19 -NanoBRET	MAP3K19	mitogen-activated protein kinase kinase kinase 19	RCK, YSK4
MAP3K2 -NanoBRET	MAP3K2	mitogen-activated protein kinase kinase kinase 2	MEKK2, MEKK2B
MAP3K21 -NanoBRET	MAP3K21	mitogen-activated protein kinase kinase kinase 21	MLK4, dJ862P8.3
MAP3K3 -NanoBRET	MAP3K3	mitogen-activated protein kinase kinase kinase 3	MAPKKK3, MEKK3
MAP3K4 -NanoBRET	MAP3K4	mitogen-activated protein kinase kinase kinase 4	MAPKKK4, MEKK 4, MEKK4, MTK1, PROo412
MAP4K1 -NanoBRET	MAP4K1	mitogen-activated protein kinase kinase kinase kinase 1	HPK1
MAP4K2 -NanoBRET	MAP4K2	mitogen-activated protein kinase kinase kinase kinase 2	GCK, BL44, RAB8IP
MAP4K3 -NanoBRET	MAP4K3	mitogen-activated protein kinase kinase kinase kinase 3	GLK, MAPKKKK3, MEKKK 3, MEKKK3, RAB8IPL1
MAP4K5 -NanoBRET	MAP4K5	mitogen-activated protein kinase kinase kinase kinase 5	GCKR, KHS, KHS1, MAPKKKK5



CELLULAR NANOBRET KINASE ASSAYS LIST (CONTINUED)

ASSAY NAME	KINASE NAME	OFFICIAL FULL NAME	ALIASES
MAPK11 -NanoBRET	MAPK11	mitogen-activated protein kinase 11	P38B, SAPK2, p38-2, PRKM11, SAPK2B, p38Beta, P38BETA2
MAPK14 -NanoBRET	MAPK14	mitogen-activated protein kinase 14	RK, p38, CSBP, EXIP, Mxi2, CSBP1, CSBP2, CSPB1, PRKM14, PRKM15, SAPK2A, p38ALPHA
MAPK14 (T1o6M) -NanoBRET	MAPK14	mitogen-activated protein kinase 14	CSBP, CSBP1, CSBP2, CSPB1, EXIP, Mxi2, PRKM14, PRKM15, RK, SAPK2A, p38, p38ALPHA
MAPK4 -NanoBRET	MAPK4	mitogen-activated protein kinase 4	ERK-4, ERK4, PRKM4, p63-MAPK, p63MAPK
MAPK6 -NanoBRET	MAPK6	mitogen-activated protein kinase 6	ERK3, HsT1725o, PRKM6, p97MAPK
MARK2 -NanoBRET	MARK2	microtubule affinity regulating kinase 2	EMK-1, EMK1, PAR-1, Par-1b, Par1b
MARK3 -NanoBRET	MARK3	microtubule affinity regulating kinase 3	CTAK1, KP78, PAR1A, Par-1a, VIPB
MARK4 -NanoBRET	MARK4	microtubule affinity regulating kinase 4	MARK4LS, MARKL1, MARKL1L, PAR-1D, MARK4
MAST3 -NanoBRET	MAST3	microtubule associated serine/ threonine kinase 3	-
MAST4 -NanoBRET	MAST4	microtubule associated serine/ threonine kinase family member 4	-
MELK -NanoBRET	MELK	maternal embryonic leucine zipper kinase	HPK38
MELK (T46oM) -NanoBRET	MELK	maternal embryonic leucine zipper kinase	HPK38, KIAAo175
MERTK -NanoBRET	MERTK	MER proto-oncogene, tyrosine kinase	MER, RP38, Tyro12, c-Eyk, c-mer
MERTK (A7o8S) -NanoBRET	MERTK	MER proto-oncogene, tyrosine kinase	MER, RP38, Tyro12, c-Eyk, c-mer
MET -NanoBRET	MET	MET proto-oncogene, receptor tyrosine kinase	HGFR, AUTS9, RCCP2, c-Met, DFNB97
MET (D1228H) -NanoBRET	MET	met proto-oncogene (hepatocyte growth factor receptor)	HGFR, AUTS9, RCCP2, c-Met, MET
MET (D1228N) -NanoBRET	MET	met proto-oncogene (hepatocyte growth factor receptor)	HGFR, AUTS9, RCCP2, c-Met, MET



CELLULAR NANOBRET KINASE ASSAYS LIST (CONTINUED)

ASSAY NAME	KINASE NAME	OFFICIAL FULL NAME	ALIASES
MET (F1200I) -NanoBRET	MET	met proto-oncogene (hepatocyte growth factor receptor)	HGFR, AUTS9, RCCP2, c-Met, MET
MET (M1250T) -NanoBRET	MET	met proto-oncogene (hepatocyte growth factor receptor)	HGFR, AUTS9, RCCP2, c-Met, MET
MET (P991S) -NanoBRET	MET	met proto-oncogene (hepatocyte growth factor receptor)	HGFR, AUTS9, RCCP2, c-Met, MET
MET (T1173I) -NanoBRET	MET	met proto-oncogene (hepatocyte growth factor receptor)	HGFR, AUTS9, RCCP2, c-Met, MET
MET (T992I) -NanoBRET	MET	met proto-oncogene (hepatocyte growth factor receptor)	HGFR, AUTS9, RCCP2, c-Met, MET
MET (V1092I) -NanoBRET	MET	met proto-oncogene (hepatocyte growth factor receptor)	HGFR, AUTS9, RCCP2, c-Met, MET
MET (Y1230A) -NanoBRET	MET	met proto-oncogene (hepatocyte growth factor receptor)	HGFR, AUTS9, RCCP2, c-Met, MET
MET (Y1230C) -NanoBRET	MET	met proto-oncogene (hepatocyte growth factor receptor)	HGFR, AUTS9, RCCP2, c-Met, MET
MET (Y1230D) -NanoBRET	MET	met proto-oncogene (hepatocyte growth factor receptor)	HGFR, AUTS9, RCCP2, c-Met, MET
MET (Y1230H) -NanoBRET	MET	met proto-oncogene (hepatocyte growth factor receptor)	HGFR, AUTS9, RCCP2, c-Met, MET
MET (Y1235D) -NanoBRET	MET	met proto-oncogene (hepatocyte growth factor receptor)	HGFR, AUTS9, RCCP2, c-Met, MET
MKNK2 -NanoBRET	MKNK2	MAPK interacting serine/ threonine kinase 2	GPRK7, MNK2
MLK1 -NanoBRET	MAP3K9	mitogen-activated protein kinase kinase kinase 9	MLK1, MEKK9, PRKE1
MLTK -NanoBRET	MAP3K20	mitogen-activated protein kinase kinase kinase 20	AZK, CNM6, MLK7, MLT, MLTK, MLTKalpha, MLTKbeta, MRK, SFMMP, ZAK, mlklak, pk
MOK -NanoBRET	MOK	MOK protein kinase	RAGE, RAGE-1, RAGE1, STK30
MUSK -NanoBRET	MUSK	muscle associated receptor tyrosine kinase	CMS9, FADS



CELLULAR NANOBRET KINASE ASSAYS LIST (CONTINUED)

ASSAY NAME	KINASE NAME	OFFICIAL FULL NAME	ALIASES
MYLK2 -NanoBRET	MYLK2	myosin light chain kinase 2	KMLC, MLCK, MLCK2, skMLCK
MYLK3 -NanoBRET	MYLK3	myosin light chain kinase 3	MLCK, MLCK2, caMLCK
MYLK4 -NanoBRET	MYLK4	myosin light chain kinase family member 4	SgKo85
NEK1 -NanoBRET	NEK1	NIMA-related expressed kinase 1	D8Erttd790e, kat
NEK11 -NanoBRET	NEK11	NIMA related kinase 11	-
NEK2 -NanoBRET	NEK2	NIMA related kinase 2	HsPK21A, NLK1, PPP1R111, RP67
NEK3 -NanoBRET	NEK3	NIMA related kinase 3	HSPK36
NEK4 -NanoBRET	NEK4	NIMA related kinase 4	NRK2, STK2, pp123o1
NEK5 -NanoBRET	NEK5	NIMA related kinase 5	-
NEK6 -NanoBRET	NEK6	NIMA related kinase 6	SID6-1512
NEK9 -NanoBRET	NEK9	NIMA related kinase 9	APUG, LCCS1o, NC, NERCC, NERCC1
NIM1K -NanoBRET	NIM1K	NIM1 serine/ threonine protein kinase	NIM1
NLK -NanoBRET	NLK	nemo like kinase	-
NRK -NanoBRET	NRK	Nik related kinase	NESK
NTRK1 (G667C) -NanoBRET	NTRK1	neurotrophic receptor tyrosine kinase 1	MTC, TRK, TRK1, TRKA, Trk-A, p14o-TrkA
NUAK1 -NanoBRET	NUAK1	NUAK family kinase 1	ARK5
NUAK2 -NanoBRET	NUAK2	NUAK family, SNF1-like kinase, 2	SNARK
PAK4 -NanoBRET	PAK4	p21 (RAC1) activated kinase 4	
PAK6 -NanoBRET	PAK6	p21 (RAC1) activated kinase 6	PAK5
PAK7 -NanoBRET	PAK7	p21 (RAC1) activated kinase 5	PAK7, PAK5
PDGFRA (V561D) -NanoBRET	PDGFRA	platelet derived growth factor receptor alpha	CD14oA, PDGFR-2, PDGFR2
PHKG1 -NanoBRET	PHKG1	phosphorylase kinase catalytic subunit gamma 1	PHKG
PHKG2 -NanoBRET	PHKG2	phosphorylase kinase catalytic subunit gamma 2	GSD9C



CELLULAR NANOBRET KINASE ASSAYS LIST (CONTINUED)

ASSAY NAME	KINASE NAME	OFFICIAL FULL NAME	ALIASES
PIK3C3 -NanoBRET	PIK3C3	phosphatidylinositol 3-kinase catalytic subunit type 3	VPS34, Vps34, hVps34
PIK3CA (C420R)/ PIK3R1 -NanoBRET	PIK3CA	phosphatidylinositol-4,5-bisphosphate 3-kinase catalytic subunit alpha	CLAPO, CLOVE, CWS5, MCAP, MCM, MCMTC, PI3K, PI3K-alpha, p110-alpha
PIK3CA (E542K)/ PIK3R1 -NanoBRET	PIK3CA	phosphatidylinositol-4,5-bisphosphate 3-kinase catalytic subunit alpha	CLAPO, CLOVE, CWS5, MCAP, MCM, MCMTC, PI3K, PI3K-alpha, p110-alpha
PIK3CA (E545A)/ PIK3R1 -NanoBRET	PIK3CA	phosphatidylinositol-4,5-bisphosphate 3-kinase catalytic subunit alpha	CLAPO, CLOVE, CWS5, MCAP, MCM, MCMTC, PI3K, PI3K-alpha, p110-alpha
PIK3CA (E545K)/ PIK3R1 -NanoBRET	PIK3CA	phosphatidylinositol-4,5-bisphosphate 3-kinase catalytic subunit alpha	CLAPO, CLOVE, CWS5, MCAP, MCM, MCMTC, PI3K, PI3K-alpha, p110-alpha
PIK3CA (H1047L)/ PIK3R1 -NanoBRET	PIK3CA	phosphatidylinositol-4,5-bisphosphate 3-kinase catalytic subunit alpha	CLAPO, CLOVE, CWS5, MCAP, MCM, MCMTC, PI3K, PI3K-alpha, p110-alpha
PIK3CA (H1047R)/ PIK3R1 -NanoBRET	PIK3CA	phosphatidylinositol-4,5-bisphosphate 3-kinase catalytic subunit alpha	CLAPO, CLOVE, CWS5, MCAP, MCM, MCMTC, PI3K, PI3K-alpha, p110-alpha
PIK3CA (H1047Y)/ PIK3R1 -NanoBRET	PIK3CA	phosphatidylinositol-4,5-bisphosphate 3-kinase catalytic subunit alpha	CLAPO, CLOVE, CWS5, MCAP, MCM, MCMTC, PI3K, PI3K-alpha, p110-alpha
PIK3CA (I800L)/ PIK3R1 -NanoBRET	PIK3CA	phosphatidylinositol-4,5-bisphosphate 3-kinase catalytic subunit alpha	CLAPO, CLOVE, CWS5, MCAP, MCM, MCMTC, PI3K, PI3K-alpha, p110-alpha
PIK3CA (M1043I)/ PIK3R1 -NanoBRET	PIK3CA	phosphatidylinositol-4,5-bisphosphate 3-kinase catalytic subunit alpha	CLAPO, CLOVE, CWS5, MCAP, MCM, MCMTC, PI3K, PI3K-alpha, p110-alpha
PIK3CA (Q546K)/ PIK3R1 -NanoBRET	PIK3CA	phosphatidylinositol-4,5-bisphosphate 3-kinase catalytic subunit alpha	CLAPO, CLOVE, CWS5, MCAP, MCM, MCMTC, PI3K, PI3K-alpha, p110-alpha
PIK3CA/ PIK3R1 -NanoBRET	PIK3CA	phosphatidylinositol-4,5-bisphosphate 3-kinase catalytic subunit alpha	CLAPO, CLOVE, CWS5, MCAP, MCM, MCMTC, PI3K, PI3K-alpha, p110-alpha
PIK3CB/ PIK3R1 -NanoBRET	PIK3CB	phosphatidylinositol-4,5-bisphosphate 3-kinase catalytic subunit beta	P110BETA, PI3K, PI3KBETA, PIK3C1
PIK3CD/ PIK3R1 -NanoBRET	PIK3CD	phosphatidylinositol-4,5-bisphosphate 3-kinase catalytic subunit delta	APDS, IMD14, P110DELTA, PI3K, p110D
PIKFYVE -NanoBRET	PIKFYVE	phosphoinositide kinase, FYVE-type zinc finger containing	CFD, FAB1, HEL37, PIP5K, PIP5K3, ZFYVE29



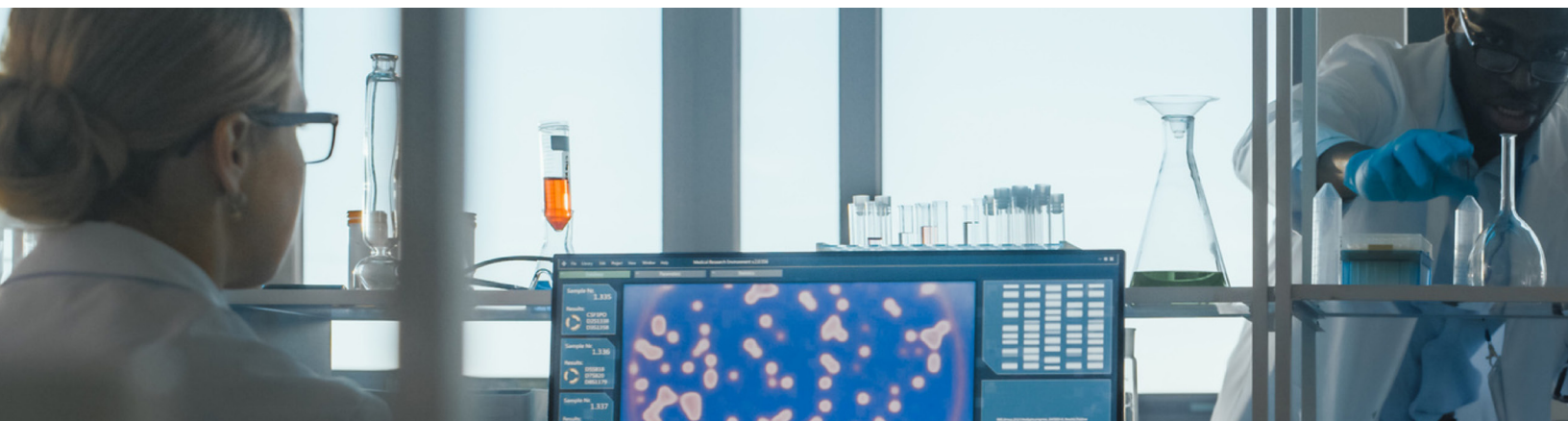
CELLULAR NANOBRET KINASE ASSAYS LIST (CONTINUED)

ASSAY NAME	KINASE NAME	OFFICIAL FULL NAME	ALIASES
PIM3 -NanoBRET	PIM3	Pim-3 proto-oncogene, serine/ threonine kinase	pim-3
PIP4K2C -NanoBRET	PIP4K2C	phosphatidylinositol-5-phosphate 4-kinase type 2 gamma	PIP5K2C
PIP5K1B -NanoBRET	PIP5K1B	phosphatidylinositol-4-phosphate 5-kinase type 1 beta	MSS4, STM7
PKMYT1 -NanoBRET	PKMYT1	protein kinase, membrane associated tyrosine/ threonine 1	MYT1, PPP1R126
PLK2 -NanoBRET	PLK2	polo like kinase 2	SNK, hPlk2, hSNK
PLK3 -NanoBRET	PLK3	polo like kinase 3	CNK, FNK, PLK-3, PRK
PLK4 -NanoBRET	PLK4	polo like kinase 4	MCCRP2, SAK, STK18
PRKAA1 -NanoBRET	PRKAA1	protein kinase AMP-activated catalytic subunit alpha 1	AMPK, AMPKa1
PRKAA2 -NanoBRET	PRKAA2	protein kinase AMP-activated catalytic subunit alpha 2	AMPK, AMPK2, PRKAA, AMPKa2
PRKACA -NanoBRET	PRKACA	protein kinase cAMP-activated catalytic subunit alpha	PKACA, PPNAD4
PRKACB -NanoBRET	PRKACB	protein kinase cAMP-activated catalytic subunit beta	PKA C-beta, PKACB
PRKCE -NanoBRET	PRKCE	protein kinase C epsilon	PKCE, nPKC-epsilon
PRKG2 -NanoBRET	PRKG2	protein kinase cGMP-dependent 2	PKG2, PRKGR2, cGK2, cGKII
PRKX -NanoBRET	PRKX	protein kinase, X-linked	PKX1
PYK2 -NanoBRET	PTK2B	protein tyrosine kinase 2 beta	PKB, PTK, CAKB, FAK2, PYK2, CADTK, FADK2, RAFTK
RET -NanoBRET	RET	ret proto-oncogene	PTC, MTC1, HSCR1, MEN2A, MEN2B, RET51, CDHF12, CDHR16, RET-ELE1
RET (M918T) -NanoBRET	RET	ret proto-oncogene	PTC, MTC1, HSCR1, MEN2A, MEN2B, RET51, CDHF12, CDHR16, RET-ELE1, RET



CELLULAR NANOBRET KINASE ASSAYS LIST (CONTINUED)

ASSAY NAME	KINASE NAME	OFFICIAL FULL NAME	ALIASES
RET (V8o4L) -NanoBRET	RET	ret proto-oncogene	PTC, MTC1, HSCR1, MEN2A, MEN2B, RET51, CDHF12, CDHR16, RET-ELE1, RET
RET (V8o4M) -NanoBRET	RET	ret proto-oncogene	PTC, MTC1, HSCR1, MEN2A, MEN2B, RET51, CDHF12, CDHR16, RET-ELE1, RET
RIOK2 -NanoBRET	RIOK2	RIO kinase 2	RIO2
RIPK1 -NanoBRET	RIPK1	receptor interacting serine/ threonine kinase 1	IMD57, RIP, RIP-1, RIP1
RIPK2 -NanoBRET	RIPK2	receptor interacting serine/ threonine kinase 2	CCK, RICK, RIP2, CARD3, GIG3o, CARDIAK
RON -NanoBRET	MST1R	macrophage stimulating 1 receptor	CD136, CDw136, NPCA3, PTK8, RON, SEA
RPS6KA3 (I416V) -NanoBRET	RPS6KA3	ribosomal protein S6 kinase A3	CLS, HU-3, ISPK-1, MAPKAPK1B, MRX19, RSK, RSK2, S6K-alpha3, p9o-RSK2, pp9oRSK2
RPS6KA3 (L6o8F) -NanoBRET	RPS6KA3	ribosomal protein S6 kinase A3	CLS, HU-3, ISPK-1, MAPKAPK1B, MRX19, RSK, RSK2, S6K-alpha3, p9o-RSK2, pp9oRSK2
RPS6KA4 -NanoBRET	RPS6KA4	ribosomal protein S6 kinase A4	MSK2, RSK-B, S6K-alpha-4
RSK1 -NanoBRET	RPS6KA1	ribosomal protein S6 kinase A1	HU-1, RSK1, p9oRsk, MAPKAPK1A
RSK2 -NanoBRET	RPS6KA3	ribosomal protein S6 kinase A3	CLS, HU-3, ISPK-1, MAPKAPK1B, MRX19, RSK, RSK2, S6K-alpha3, p9o-RSK2, pp9oRSK2
RSK3 -NanoBRET	RPS6KA2	ribosomal protein S6 kinase A2	HU-2, RSK3, p9oRSK2, p9o-RSK3, pp9oRSK3, MAPKAPK1C, S6K-alpha, S6K-alpha2
RSK4 -NanoBRET	RPS6KA6	ribosomal protein S6 kinase A6	PP9oRSK4, RSK-4, RSK4, S6K-alpha-6, p9oRSK6
SBK3 -NanoBRET	SBK3	SH3 domain binding kinase family member 3	SGK11o
SGK1 -NanoBRET	SGK1	serum/ glucocorticoid regulated kinase 1	SGK, SGK1
SGK2 -NanoBRET	SGK2	serum/ glucocorticoid regulated kinase 2	H-SGK2, dJ138B7.2
SIK1 -NanoBRET	SIK1	salt inducible kinase 1	MSK, SIK, SIK-1, SNF1LK
SIK2 -NanoBRET	SNF1LK2	salt inducible kinase 2	LOH11CR1I, QIK, SIK-2, SNF1LK2
SIK3 -NanoBRET	SIK3	SIK family kinase 3	L19, QSK, SIK-3
SIK3 FL -NanoBRET	SIK3 FL	SIK family kinase 3	L19, QSK, SIK-3 FL



CELLULAR NANOBRET KINASE ASSAYS LIST (CONTINUED)

ASSAY NAME	KINASE NAME	OFFICIAL FULL NAME	ALIASES
SLK -NanoBRET	SLK	STE2o like kinase	LOSK, STK2, se2o-9, bA16H23.1
SNRK -NanoBRET	SNRK	SNF related kinase	HSNFRK
SRC -NanoBRET	SRC	SRC proto-oncogene, non-receptor tyrosine kinase	ASV, SRC1, THC6, c-SRC, p60-Src
SRMS -NanoBRET	SRMS	src-related kinase lacking C-terminal regulatory tyrosine and N-terminal myristoylation sites	C2oorf148, PTK70, SRM, dJ697K14.1
STK10 -NanoBRET	STK10	serine/ threonine kinase 10	LOK, PRO2729
STK11 -NanoBRET	STK11	serine/ threonine kinase 11	LKB1, PJS, hLKB1
STK16 -NanoBRET	STK16	serine/ threonine kinase 16	KRCT, MPSK, PKL12, PSK, TSF1, hPSK
STK17B -NanoBRET	STK17B	serine/ threonine kinase 17b	DRAK2
STK24 -NanoBRET	STK24	serine/ threonine kinase 24	HEL-S-95, MST3, MST3B, STE2o, STK3
STK26 -NanoBRET	STK26	serine/ threonine kinase 26	MASK, MST4
STK3 -NanoBRET	STK3	serine/ threonine kinase 3	KRS1, MST2
STK32A -NanoBRET	STK32A	serine/ threonine kinase 32A	YANK1
STK32B -NanoBRET	STK32B	serine/ threonine kinase 32B	HSA25o839, STK32, STKG6, YANK2
STK33 -NanoBRET	STK33	serine/ threonine kinase 33	
STK35 -NanoBRET	STK35	serine/ threonine kinase 35	CLIK1, STK35L1
STK36 -NanoBRET	STK36	serine/ threonine kinase 36	FU
STK38 -NanoBRET	STK38	serine/ threonine kinase 38	NDR, NDR1
STK38L -NanoBRET	STK38L	serine/ threonine kinase 38 like	NDR2
STK4 -NanoBRET	STK4	serine/ threonine kinase 4	KRS2, MST1, YSK3
TBK1 -NanoBRET	TBK1	TANK binding kinase 1	NAK, T2K, FTDALS4
TEC -NanoBRET	TEC	tec protein tyrosine kinase	PSCTK4
TEK -NanoBRET	TEK	TEK receptor tyrosine kinase	CD2o2B, GLC3E, TIE-2, TIE2, VMCM, VMCM1
TEK (A1124V) -NanoBRET	TEK	TEK receptor tyrosine kinase	CD2o2B, GLC3E, TIE-2, TIE2, VMCM, VMCM1



CELLULAR NANOBRET KINASE ASSAYS LIST (CONTINUED)

ASSAY NAME	KINASE NAME	OFFICIAL FULL NAME	ALIASES
TEK (P883A) -NanoBRET	TEK	TEK receptor tyrosine kinase	CD202B, GLC3E, TIE-2, TIE2, VMCM, VMCM1
TEK (R849W) -NanoBRET	TEK	TEK receptor tyrosine kinase	CD202B, GLC3E, TIE-2, TIE2, VMCM, VMCM1
TEK (Y1108F) -NanoBRET	TEK	TEK receptor tyrosine kinase	CD202B, GLC3E, TIE-2, TIE2, VMCM, VMCM1
TEK (Y897C) -NanoBRET	TEK	TEK receptor tyrosine kinase	CD202B, GLC3E, TIE-2, TIE2, VMCM, VMCM1
TEK (Y897S) -NanoBRET	TEK	TEK receptor tyrosine kinase	CD202B, GLC3E, TIE-2, TIE2, VMCM, VMCM1
TESK1 -NanoBRET	TESK1	testis-specific kinase 1	
TGFBR2 -NanoBRET	TGFBR2	transforming growth factor beta receptor 2	AAT3, FAA3, LDS1B, LDS2, LDS2B, MFS2, RIIC, TAAD2, TBR-ii, TBR11, TGF-2, TGFbeta-R11
TIE1 -NanoBRET	TIE1	tyrosine kinase with immunoglobulin like and EGF like domains 1	JTK14, TIE
TLK1 -NanoBRET	TLK1	tousled like kinase 1	PKU-beta
TLK2 -NanoBRET	TLK2	tousled like kinase 2	HsHPK, MRD57, PKU-ALPHA
TNK1 -NanoBRET	TNK1	tyrosine kinase non receptor 1	
TNK2 -NanoBRET	TNK2	tyrosine kinase non receptor 2	ACK, ACK-1, ACK1, p21cdc42Hs
TNK2(Iso1) -NanoBRET	TNK2(Iso1)	tyrosine kinase non receptor 2	ACK, ACK-1, ACK1, p21cdc42Hs
TNNI3K -NanoBRET	TNNI3K	TNNI3 interacting kinase	CARK, CCDD
TRKA -NanoBRET	NTRK1	neurotrophic receptor tyrosine kinase 1	MTC, TRK, TRK1, TRKA, Trk-A, p140-TrkA
TRKB -NanoBRET	NTRK2	neurotrophic receptor tyrosine kinase 2	OBHD, TRKB, trk-B, GP145-TrkB
TSSK1B -NanoBRET	TSSK1B	testis specific serine kinase 1B	FKSG81, SPOGA4, STK22D, TSK1, TSSK1
TTK -NanoBRET	TTK	TTK protein kinase	CT96, ESK, MPH1, MPS1, MPS1L1, PYT
TXK -NanoBRET	TXK	TXK tyrosine kinase	BTKL, PSCTK5, PTK4, RLK, TKL
TYK2 -NanoBRET	TYK2	tyrosine kinase 2	IMD35, JTK1
TYK2 (JH1 domain) -NanoBRET	TYK2	tyrosine kinase 2	IMD35, JTK1
TYK2 (JH2 domain) -NanoBRET	TYK2	tyrosine kinase 2	IMD35, JTK1



CELLULAR NANOBRET KINASE ASSAYS LIST (CONTINUED)

ASSAY NAME	KINASE NAME	OFFICIAL FULL NAME	ALIASES
TYRO3 -NanoBRET	TYRO3	TYRO3 protein tyrosine kinase	BYK, Dtk, RSE, Rek, Sky, Tif, Etk-2
ULK1 -NanoBRET	ULK1	unc-51 like autophagy activating kinase 1	ATG1, ATG1A, UNC51, hATG1, Unc51.1
ULK2 -NanoBRET	ULK2	unc-51 like autophagy activating kinase 2	ATG1B, Unc51.2
ULK3 -NanoBRET	ULK3	unc-51 like kinase 3	-
WEE1 -NanoBRET	WEE1	WEE1 G2 checkpoint kinase	WEE1Ahu
WEE2 -NanoBRET	WEE2	WEE2 oocyte meiosis inhibiting kinase	OOMD5, WEE1B
YES1 -NanoBRET	YES1	YES proto-oncogene 1, Src family tyrosine kinase	HsT441, P61-YES, Yes, c-yes

Making tomorrow safer than today