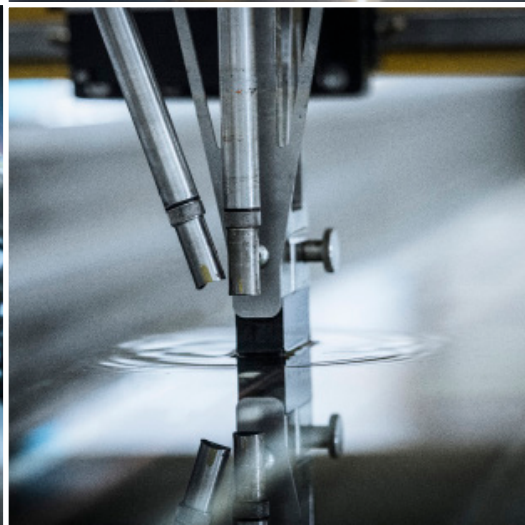
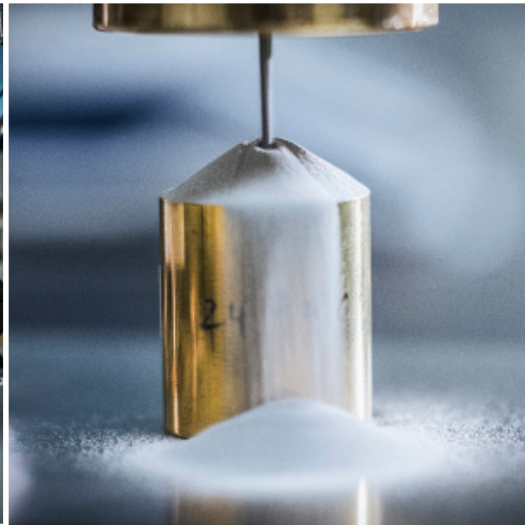




SERVICES CAPABILITY SUMMARY



AEROSPACE AND DEFENSE



LOCATIONS	SERVICES										
	Materials Testing	Mechanical Testing - Metals	Mechanicals Testing - Polymers & Composites	Mechanical Testing - Construction Materials	Abrasion & Wear Testing	Fatigue Testing - Metals	Fatigue Testing - Non-metals*	Failure Analysis - Metals	Failure Analysis - Non-metals	Thermal Analysis of Polymers	Metallography
Broken Arrow, OK	●	●	●	●	●			●	●	●	●
Charlotte, NC	●	●						●			●
Chicago, IL	●	●						●			●
Cincinnati, OH	●	●	●		●	●					
Cleveland, OH	●	●						●			●
Cleveland-Middleburg Heights, OH	●										
Daleville, IN	●	●						●			●
Des Moines, IA	●				●						
Gary, IN	●	●									●
Hartford, CT	●										
Houston-Yorktown Plaza, TX	●	●	●		●	●		●			●
Huntington Beach, CA	●	●				●		●			●
Los Angeles, CA	●		●		●	●				●	
New Berlin, WI	●	●	●		●	●		●	●	●	●
Newtown, PA	●	●				●		●			●
Portland-Elam Young, OR	●				●						
Portland-Milwaukie, OR	●	●						●			●
Rancho Dominguez, CA	●										
St. Paul, MN	●	●	●		●			●	●		●
Warren-11 Mile, MI	●	●	●		●					●	
Warren-Concept, MI	●	●	●					●	●	●	●
Wixom, MI	●	●				●		●			●
Monterrey, NL, Mexico	●	●									●
Cambridge, ON, Canada	●	●									●
Mississauga-Aero, ON, Canada	●	●				●					
Mississauga-BPE, ON, Canada	●			●							
Pointe Claire, QC, Canada	●	●				●					●

* Testing available at Element locations outside of North America



LOCATIONS	SERVICES								
	Chemical Analysis - Metals	Chemical Analysis - Construction Materials*	Reaction to Fire / Flammability	Non-destructive Testing	Corrosion Testing	Weld Testing / Inspection	Fastener Testing	Electrical Testing	Coatings Testing
Broken Arrow, OK	●			●	●	●			
Charlotte, NC	●				●	●	●		●
Chicago, IL	●				●	●	●		
Cincinnati, OH									●
Cleveland, OH	●			●	●	●	●		●
Cleveland-Middleburg Heights, OH				●					
Daleville, IN	●				●	●	●		●
Des Moines, IA				●	●	●			
Gary, IN	●				●				
Hartford, CT				●					
Houston-Yorktown Plaza, TX	●			●	●	●	●		●
Huntington Beach, CA	●			●	●	●	●		●
Los Angeles, CA			●						●
New Berlin, WI	●			●	●	●	●		●
Newtown, PA	●			●	●	●	●		●
Portland-Elam Young, OR				●					
Portland-Milwaukie, OR	●			●		●			
Rancho Dominguez, CA				●	●				
St. Paul, MN	●		●	●	●	●			●
Warren-11 Mile, MI			●		●				●
Warren-Concept, MI	●				●			●	●
Wixom, MI	●				●	●	●		●
Monterrey, NL, Mexico				●					
Cambridge, ON, Canada					●	●	●		●
Mississauga-Aero, ON, Canada									
Mississauga-BPE, ON, Canada			●						
Pointe Claire, QC, Canada	●				●	●			

* Testing available at Element locations outside of North America



LOCATIONS	SERVICES									
	Product Qualification Testing	Environmental Testing (Temp, Humidity, Altitude, etc.)	Vibration & Shock	EMC/EMI Testing	Lightning Simulation*	RTCA & MIL-STD Environmental Testing	RTCA & MIL-STD EMC Testing	Corrosion Testing	Cycling/Durability Testing	Mechanical Properties Testing*
Jupiter, FL	●	●	●			●		●		
Melbourne, FL	●	●	●	●		●	●	●		
Minneapolis-Bloomington, MN	●	●	●	●		●	●	●		
St. Paul, MN	●	●	●			●				
Troy, MI	●	●	●						●	
Warren-11 Mile	●	●	●			●				

* Testing available at Element locations outside of North America

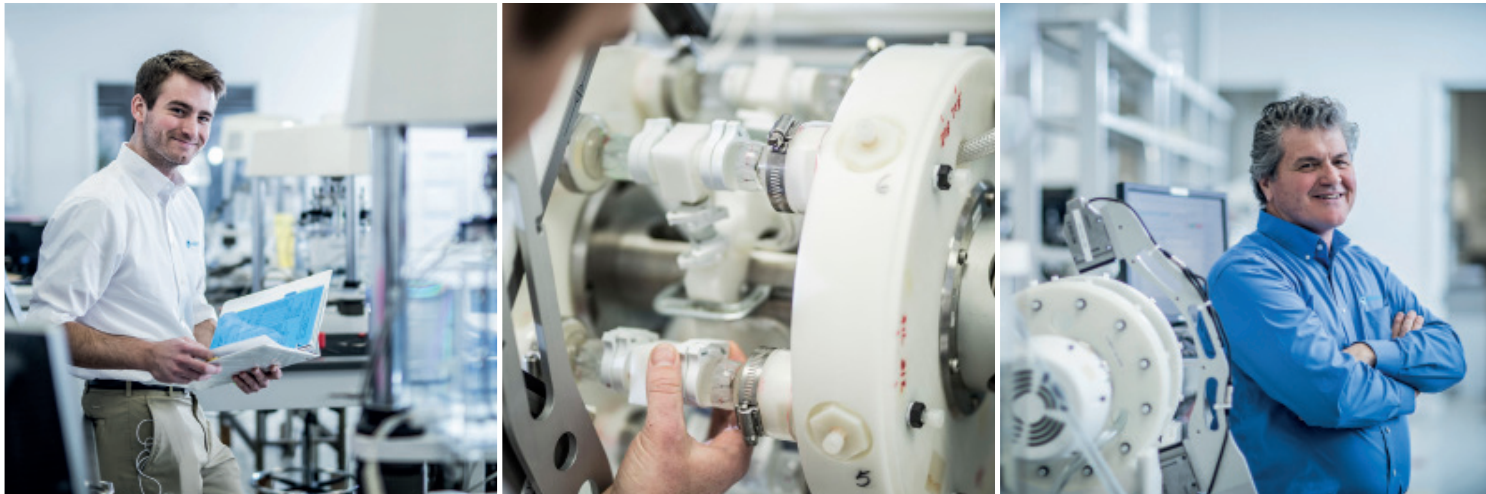
LOCATIONS	SERVICES										
	Proof Load Testing*	Fire Resistance	Structures Testing*	Pressure Testing/Cycling	Fluid Systems*	Fuel Systems	Bleed Air Systems	Rail Systems*	Fenestration Products	Acoustics	Package Testing
Jupiter, FL		●		●	●	●	●			●	
Melbourne, FL				●							
Minneapolis-Bloomington, MN		●		●	●					●	●
St. Paul, MN		●		●					●	●	●
Troy, MI										●	
Warren-11 Mile		●		●	●	●	●				

* Testing available at Element locations outside of North America

TRUST THE CERTAINTY OF



With almost 200 years of experience and a global network of world-class laboratories, we make certain that the materials and products we test, inspect and certify for our customers are safe, quality, compliant and fit for purpose.



[element.com](https://www.element.com)